

IFE-AS2WS

American Style Worm Drive Clamps 2-Piece Housing With Spring



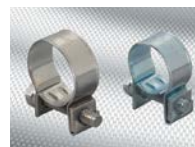
www.ife-group.com



IFE-AS2WS clamps are used in heavy truck, bus, heavy equipment, and marine applications that require a dynamic clamp that compensates for thermal expansion and contractions.

- 2 band widths available 9/16" (14.2 mm) and 5/8" (15.8 mm)
- Band and housing are 304 stainless steel for corrosion resistance
- 2-piece housing for extra strength
- American Style 2 pcs housing with conical spring washers and liner

IFE Americas is a global provider of sealing and retaining solutions to meet customer needs. We offer a wide range of clamps, couplings, straps, and sleeves, with in-house testing facilities and technical support.



IFE-AS2WS: American Style Worm Drive Clamps 2-Piece Housing With Spring



www.ife-group.com

- All stainless (stock) version has 410 stainless screw and spring washers
- Optional version with zinc plated carbon steel spring washers and screw available



9/16" (14.2mm) Band Width, 5/16" (8mm) Screw Hex Head			
Size		Part Numbers	
mm	inch	Screw and Spring Washers Zinc Plated Carbon Steel (W2)	Screw and Spring Washers 410 Stainless (W4)
16-27	5/8-1 1/16	12210328020027	12210328040027
20-32	13/16-1 1/4	12210328020032	12210328040032
25-40	1-1 9/16	12210328020040	12210328040040
30-45	1 3/16-1 3/4	12210328020045	12210328040045
35-50	1 3/8-1 15/16	12210328020050	12210328040050
38-57	1 1/2-2 1/4	12210328020057	12210328040057
47-63	1 7/8-2 1/2	12210328020063	12210328040063
57-79	2 3/4-3 1/8	12210328020079	12210328040079

5/8" (14.2mm), 3/8" (10mm) Screw Hex Head			
Size		Part Numbers	
mm	inch	Screw and Spring Washers Zinc Plated Carbon Steel (W2)	Screw and Spring Washers 410 Stainless (W4)
26-45	1-1 3/4	12210721020045	12210721040045
32-54	1 1/4-2 1/8	12210721020054	12210721040054
45-67	1 3/4-2 5/8	12210721020067	12210721040067
57-80	2 1/4-3 1/8	12210721020080	12210721040080
70-92	2 3/4-3 5/8	12210721020092	12210721040092
83-105	3 1/4-4 1/8	12210721020105	12210721040105
96-118	3 3/4-4 5/8	12210721020118	12210721040118
108-131	4 1/4-5 3/16	12210721020131	12210721040131
121-143	4 3/4-5 5/8	12210721020143	12210721040143
134-156	5 1/4-6 1/8	12210721020156	12210721040156
146-169	5 3/4-6 5/8	12210721020169	12210721040169
159-181	6 1/4-7 1/8	12210721020181	12210721040181
172-194	6 3/4-7 5/8	12210721020194	12210721040194
184-207	7 1/4-8 1/8	12210721020207	12210721040207
197-219	7 3/4-8 5/8	12210721020219	12210721040219
210-232	8 1/4-9 1/8	12210721020232	12210721040232
264-286	10 3/8-11 1/4	12210721020286	12210721040286
313-335	12 1/4-13 3/16	12210721020335	12210721040335

DISTRIBUTED BY



advancecomponents.com

972-446-5500

